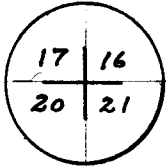


**CERTIFIED LAND CORNER RECORDATION**

T15N, R67W

DESCRIPTION OF CORNER EVIDENCE FOUND, AND ORIGINAL RECORD (If known)

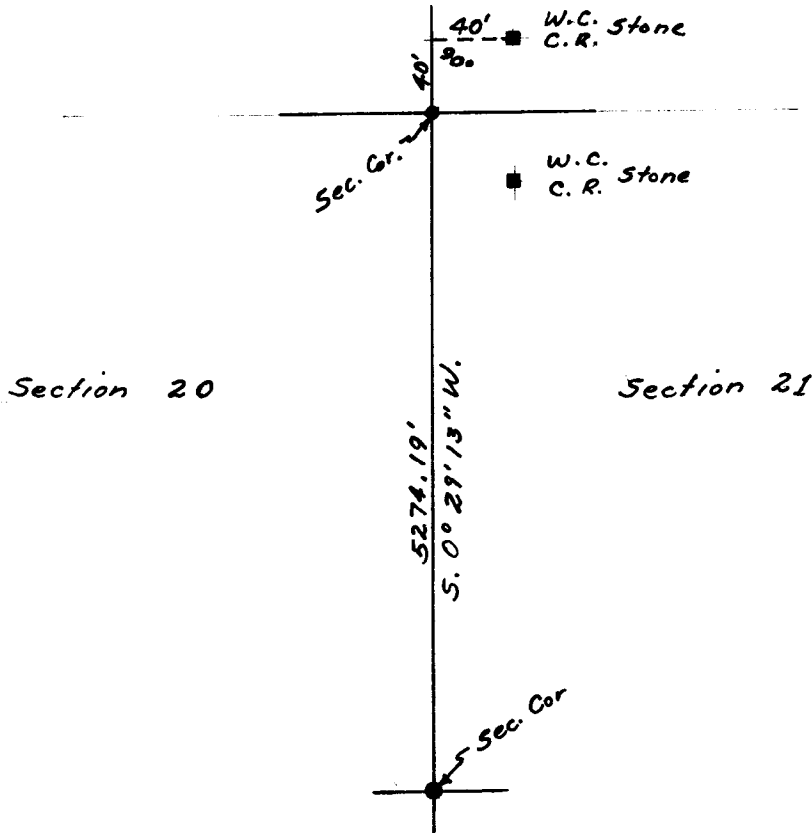


Two witness corner - County road stones were found as indicated below. The location of the stones in reference to the County roads, which run north-south and east west, was varified by the County Engineers office. The stones were used to establish the center point of the two County roads which point was accepted as the Section corner location.

DESCRIPTION OF MONUMENT AND ACCESSORIES ESTABLISHED TO PERPETUATE THE ORIGINAL LOCATION OF THIS CORNER:

No monuments or accessories were established

SKETCH, WITH COURSE AND DISTANCE TO ADJACENT CORNER IF DETERMINED IN THIS SURVEY.  
(May Sketch or Paste Reproduction on Reverse Side.)



I, Edward C. Fry certify that I have carefully performed or reviewed the work done on the diagrammed corner as reported on this recordation form and approve the same.

Edward C. Fry  
Signature of Surveyor

P.E., L.S. No. 662  
Registration No.

STATE OF WYOMING,  
Office of Clerk and Recorder,  
County of Terrance

**575143**

**APR 16 1980**

This "corner record" was filed for record on the \_\_\_\_\_ day of \_\_\_\_\_, 19\_\_\_\_, was noted on the cross-index plat and is assigned page No. \_\_\_\_\_, in book No. \_\_\_\_\_.

James C. Whitehead  
County Official

JB

Cross Index No.	T. <u>N9</u>	T. <u>15</u>	R. <u>67</u>	Mer.
	_____	_____	_____	Mer.
	_____	_____	_____	Mer.
	_____	_____	_____	Mer.
	_____	_____	_____	Mer.
	_____	_____	_____	Mer.
	_____	_____	_____	Mer.

N-9      15-67